

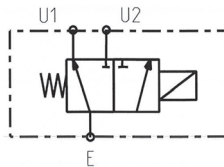
# Solenoid control diverter flow

Hereby we are glad to inform you that we have now available new electric diverter valves.

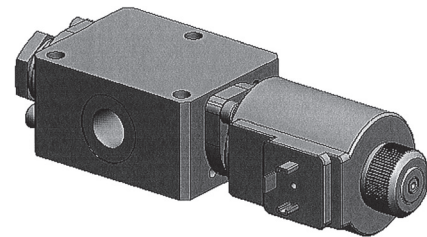
## The versions available are:

- Diverter Valve G 3/8" for flow up to 40 L/min at 350 Bar

Ports: G 3/8  
Voltage: 24V  
Power: 46W  
Max. flow: 40 l/min  
Max. pressure: 350 bar

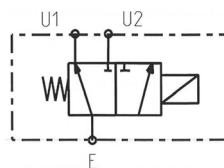


**1219200047**

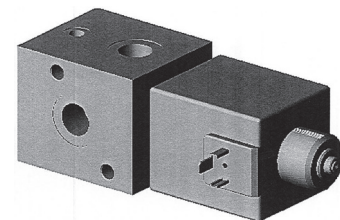


- Diverter Valve G 3/4" for flow up to 90 L/min at 350 Bar

Ports: G 3/4  
Voltage: 24V  
Power: 60W  
Max. flow: 90 l/min  
Max. pressure: 350 bar



**1219200064**



## Typical Applications:

- Hook loaders
- Special applications where you need to divert the oil flow into different function or control valves.

For further technical information please refer to the product data sheets available on our web site [www.omfb.com](http://www.omfb.com).